



Spotlight on...

Central PA Collaboration Days



In This Issue...

- Spotlight On..... 1
- Discussion Forums..... 2
- Coach Log..... 1
- Summary Dates..... 3
- Upcoming Webinars..... 4
- If not a Workshop, Then What?..... 4
- CFF Subject Area Listservs..... 5
- Photos..... 6
- Tracking Flip the Switch Events..... 6
- Wilkes, eMBEDDED Learning, & PDE Study Group..... 7
- CFF Vendor Reports..... 8
- For Your Clipboard..... 8
- ISTE @ PETE & C..... 9
- CFF Best Practices Institute.. 10
- Mark Your Calendars..... 11
- CFF Team..... 11

Teachers of English/Language Arts Collaborate—January 30, 2008

by Joanne Romano & Beth Cornell
Coach Mentors

It all began with a conversation..

Last year, when Sue Sheffer, Colette Cairns, Jim Lamb, Jeff Rothenberger, Fred Griffiths, Sharon Gould, Jim Gates, Laurie Vitale, and Marge Runkle decided to set up opportunities to meet and discuss the CFF project, it quickly became apparent that not only could they support one another in the *then novel* CFF project, but their cross-district, cross-county, and cross-platform collaboration would provide more access to expertise, to ideas, and to willing behind the scenes support to assist their respective CFF teachers. What could that look like? It would look like the hugely successful Central PA Collaboration Days!

The first Central PA Collaboration Day was held in the Fall and was designed to support teachers of Mathematics. Seventy teachers attended. On January 30, high school teachers of English/Language Arts, 150 of them, arrived at Warwick High anxious to participate in a professional development opportunity that was designed just for them.

See **COLLABORATION** on page 2

COACH LOG

Over the past few weeks, you have seen reminders to keep your *Coach Log* up-to-date. If you do not have your log up-to-date, please do so right away. The aggregate data is needed for *PETE & C*.

Please continue to keep your log up-to-date throughout the year.

Purposes of Coach Log

The *Coach Log* has several purposes.

- ▶ First and foremost, it is a reflection tool for you as a Coach. As coaches, you ask teachers to reflect on their lessons. Now it's your turn.
- ▶ The aggregate data from the logs will be used by PDE to get a better understanding of how CFF coaches spend their time.

See **LOG** on page 3

COLLABORATION from page 1



For and By Teachers

Not only are these collaboration days designed for teachers, but teachers are the presenters. CFF coaches invite content teachers to present ideas and technology integrated projects to their colleagues.

In addition, CFF coaches present short, technology sessions. So, not only do teachers get a chance to work with other teachers of their content, but they get the opportunity to pick up information that can support a new way of learning and teaching.

Teachers Said...

So, was the January 30th day a success? One coach reported that a teacher “rewrote...plans for tomorrow.” And, “...another is reworking...plans for next week!”

From another teacher to a CFF Coach: “I didn’t expect it to be much more than a day out of the classroom, but it turned out to be very helpful and very inspirational...These teachers and presenters seemed like they really were experiencing almost exactly what I am right now...I would like

nothing more right now than to sit down with only the rawest of materials that I want to cover and build them up based on what I saw and heard today. Unfortunately, that isn't an option. What is an option, though, is that I look at what will essentially be my last three major units for the year and figure out how I can fix those up. I guess this is where the action plan (and you) come into play.”

Talk about change!



Challenges

Great planning and word of mouth are powerful tools, as evident by the large number of teachers who participated in both collaboration days! Now that the Cohort 2 coaches have joined in, the Central PA Collaboration has more hands to help and more minds to dream.

Want to Learn More?

Hear more about this exciting collaboration at the PETE & C Coach Pre-Conference. The panel discussion will feature this project and how you can get started in your region!

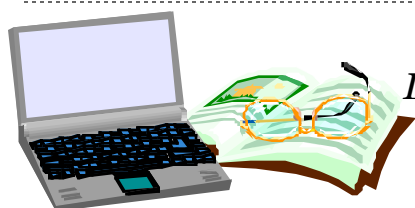
Supporting resources will be posted to cffcoach.org.

CFF DISCUSSION FORUMS

“Continue or join in the Conversation!”

Current discussion forums on cffcoach.org

- ☺ General Q&A (look inside)
- ☺ Grand Debates
- ☺ Flip the Switch
- ☺ What do I do when students abuse the technology?
- ☺ Discussions — Mac users
- ☺ Discussions — Windows users
- ☺ Nine Roles of Coaches Discussion
- ☺ Lesson Stories and Ideas
- ☺ Thoughts from Cohort 1 to Cohort 2 Coaches
- ☺ Embedded Learning
- ☺ Evaluation of CFF
- ☺ Collaboration Requests
- ☺ Recommended Sessions at PETE&C
- ☺ Reaching The Reluctant Teacher
- ☺ Cross-Division Study Group Connections (Embedded Learning)
- ☺ Problem-Based Learning



Learning is what most adults will do for a living in the 21st Century.

Bob Perelman

LOG from page 1

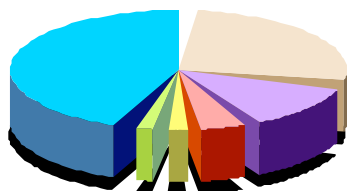
- ▶ Your Coach Mentor may use your Coach Log as a way to get the discussion rolling during a phone call or visit.

Reflection on Practice

The Coach Log gives you an opportunity to reflect upon your coaching practice in two ways—*Recording Activities & Narrative*.

Recording Activities

The first use of the log is to record the types of activities done each day, how much time is spent doing each activity, and how often these activities are conducted. Although it may seem tedious at times, it encourages you to give thought to how you are spending your day.



Reports

Be sure to take a look at the Reports offered in the Coach Log. These reports are located on the right side of the k12ware.com home page. For a running record of your activity, take a look at the *Daily Log – Activity* report. This provides a day-by-day record of how your time was spent. Next, take a look at the pie charts: *Daily Log – Time Allocation*. It includes 3 charts of your coaching activity since Boot Camp. There are three views: by Element/Level of Intensity, by Role, and by Activity (% of time). At *PETE & C*, you'll have a chance to see where you fit

in relative to the entire group. In the coming days, you'll be able to look at these charts for a select period of time. So, if you only started coaching in December, you can run a report beginning with December.

Cohort 2 Coaches

When Cohort 2 coaches first look at the charts, remember your teaching time and time spent at Coach PD will be reflected in the *Not a Defined Role* piece of the pie. That piece will be disproportionately high. As you finish your Coach PD and move in to your Coach Role (FT or PT), that will change.

Narrative Log

The second type of reflection is the narrative log. Many Cohort 2 coaches are just getting started, so this section of the log may be scant. As equipment roles out and you begin working with teachers regularly, you should expect your narrative log to reflect deeper, and richer interactions. Your roles will be more varied as you evolve as CFF coach.

Narrative Log Process & Procedure

- The narrative log should be done for the same 2 teachers once a week throughout the year.
- Select a date.
- Then select the teacher before opening the form.

You can fully expect there may be weeks when you do nothing more than wave to the teacher in the hall. That's okay.

Adding Text Later

To add to the Narrative log remember to pick both the date and the teacher.

Moving Forward

Please continue to keep your log up-to-date. If you have any questions about an activity in the Coach Log, please discuss it with your Coach Mentor. The CFF Coach *big picture* will be shared at the *PETE & C* Coach Pre-conference, February 9th.

SUMMARY DATE SHEET

UPDATED—JANUARY 30

Included as an attachment to this UPDATE is a document that outlines all important deadlines and events for the remainder of the 2007-08 school year. Dates and locations are included, as well as, who has been invited (coaches, teachers, and/or administrators). It is hoped this will help districts plan for approaching deadlines, while also keeping an eye on those *down the road* items. Please print this document for your records and feel free to share with your entire CFF team. **Please note:** Apple Leadership meetings, Out of the Box trainings, and Open Box trainings are not listed as they are district-specific.

This information is also available on EdHub.

Important Dates!						
1	2	3	4	5	6	7
8	9	10	11	12	13	14
15	16	17	18	19	20	21
22	23	24	25	26	27	28

UPCOMING CFF WEBINARS

Feb. 19, Tues., 2:00 – 3:00 P.M.

Essential Questions

Ralph Maltese

Feb. 20, Wed., 9:00 – 10:00 A. M.

TIGed

Emily Kornblut

Feb. 22, Fri., 1:00 – 2:00 P. M.

TIGed

Emily Kornblut

Feb. 25, Mon., 11:00 A.M. – 12:00 P. M.

Open Space: What Does 21st Century Teaching and Learning Look Like?

Coach Panel

Mar. 3, Mon., 9:00 – 10:00 A. M.

TIGed

Emily Kornblut

Mar. 13, Thurs., 9:30 – 10:30 A.M.

Fair Use in Educational Technology

Renee Hobbs, Professor,
Temple University

Peter Jaszi, Professor,
Washington College of Law,
American University

IF NOT A WORKSHOP, THEN WHAT?

National Staff Development Council

www.nsd.org

1. **Conduct** action research projects
2. **Analyze** teaching cases
3. **Be observed** and receive feedback
4. **Join** a cadre of in-house trainers
5. **Plan** lessons with a teaching colleague
6. **Consult** an expert
7. **Examine** student data
8. **Be coached** by a peer or an expert
9. **Lead** a book study
10. **Visit** another school
11. **Write** assessments with a colleague
12. **Participate** in a videoconference or conference calls with experts
13. **Do** a classroom walk-through
14. **Give** presentations at conferences
15. **Research** on the Internet
16. **Lead** a school-wide committee or project
17. **Participate** in lesson study
18. **Map** your curriculum
19. **Coach** a colleague
20. **Be** a mentor—be mentored
21. **Join** a professional network
22. **Use** a tuning protocol to examine student work
23. **Maintain** a professional portfolio
24. **Write** an article about your work
25. **Observe** other teachers teaching
26. **Read** journals, educational magazines, books
27. **Participate** in a critical friends group
28. **Do** a self-assessment
29. **Shadow** a student, a teacher, or another professional in the field
30. **Keep** a reflective log or journal



Learning is a treasure that will follow its owner everywhere.

Chinese Proverb

CFF SUBJECT AREA LISTSERVS

CFF teachers are invited to join the new CFF Subject Area listservs. Please encourage your teachers to sign up! A primer for using subject area listservs is available on cffcoach.org in the top section. In addition, this information was posted to the CFFCoach listserv on January 18, 2008. It is hoped these listservs will provide another communication medium for exciting collaboration across the state!

To join a listserv:

Address an e-mail to: listserv@mailinglist.caiu.org

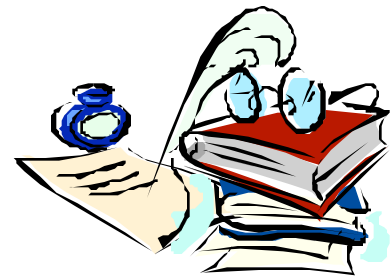
The subject is ignored

In the BODY type: subscribe cffxxxxx (the list) yourfirstname yourlastname



Social Studies

Cffsocialstudies@mailinglist.caiu.org



English/Language Arts

Cffenglish@mailinglist.caiu.org



Science

Cffscience@mailinglist.caiu.org

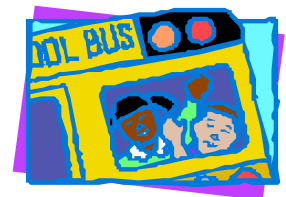


Math

Cffmath@mailinglist.caiu.org

Education is not the filling of a bucket, but the lighting of a fire.

W. B. Yeats



PHOTOS—CALLING COHORT 1 & 2 SCHOOLS!

Many thanks to those who have sent photos of your district's CFF experiences. They have all been great and we are enjoying looking through them. We are still in need of many more. If you have photographs of your project implementation—equipment arriving off the truck, your staging area, installation, *out of the box training*, students and teachers using the CFF technology—please send a CD to Bethany Rohler 8th Floor, Classrooms for the Future, Pennsylvania Department of Education, 333 Market St., Harrisburg, PA 17126, or email them to: c-brohler@state.pa.us

The PDE would like to use them to document the CFF project.

**TRACKING FLIP THE SWITCH**

The CFF team would like to track districts' Flip the Switch events. If you have already hosted or are planning to host a Flip the Switch event, please e-mail Kara Thomas, CFF Secretary, at c-kthomas@state.pa.us. Please include the date of your event, and list any Pennsylvania Senators or Representatives who will attend or have attended. Have you considered what you might do for your Flip the Switch event? In the General Q&A discussion forum on cffcoach.org, there is a Flip the Switch thread. What are your ideas for Flip the Switch? Did you make a great invitation? Flyer? Handouts? Share your files when you post to the forum.

For ideas on hosting a *Flip the Switch* event, access to the January 4 webinar is available on <http://vclass.cciu.org>. Click on the date and the *Recordings* button to listen/view the webinar.

Cohort 1 districts are encouraged to also host an event for your Senators and Representative. You might want to show them how effective the program is since it was launched. You have many more opportunities to share your successes than you did at your original event!

IN THE NEWS?

When the press covers a CFF story, make sure the reporter knows to mention CFF in the report. Also, please inform your Coach Mentor of your *Flip the Switch* events and any CFF press coverage. Forward press clippings, pictures, etc., to:

c-kthomas@state.pa.us



*Wilkes Graduate Course Announcement & eMBEDDED Learning***ATTENTION Cohort 1 Coaches
Important Graduate Course Information**

If your CFF teachers are considering taking the eMBEDDED Learning course: *Teaching Authentic Math/Science/Social Studies/English* for graduate credit through Wilkes University, please note. These courses **will only be offered two more times during this school year**—in the SPRING.

Due to the job-embedded learning that takes place during this course, it is **NOT** offered during the Summer.

Session 2: Feb. 11 - May 19 (8wks)

Registration deadline: Feb. 8th

Session 3: March 17 - May 19 (12 wks)

Registration deadline: March 14th

This does NOT apply to those teachers who are taking it for Act 48 credit.

**eMBEDDED Learning
Creating Cross Division Study Groups
Cohort 1**

Directions for creating cross division study groups are available on the *eMBEDDED Learning Academy* website, www.embeddedlearningacademy.com/pde/21. Please refer to the site for information regarding the process.

To make a connection with another district, go to cffcoach.org, look in the Discussion Forum entitled, *Cross Division Study Group Connections*.

PDE & THE NEED FOR CHANGE

Joanne Romano and PDE Curriculum Specialists in Sync Point discussion.

PDE Curriculum Specialists, CFF Coach Mentors, and the CFF Project Manager are participating in the course, *Teaching in the 21st Century—The Need for Change*.

As teachers are asked to reflect on instructional practice, the PDE Study Group views this as an opportunity to reflect on how to embed 21st Century skills, web 2.0 and other technologies into the design of their respective professional development, facilitation, and administration in order to model and support the integration of appropriate technologies.

CFF Vendor Reports

A vendor installation survey has been set up for districts to report their experiences with their vendor. The feedback form can be accessed by visiting: <http://www.caiu.org/c4feedback>. Both Cohorts 1 and 2 are encouraged to fill out this survey, relevant to the 2007-08 school year. This is a great opportunity for districts to share any issues, either equipment or installation related, they may have experienced. Both positive and negative feedback is welcome. Clicking on the **done** button at the bottom of the page will automatically submit your report. Thank you in advance for taking the time to fill out this one-page survey.



Experiencing Technical Issues?

Please Note: The following information is for Technology Directors and designed to provide support for issues that have not been adequately addressed by the vendor. Please pass along.

When you run into any equipment and/or service issues from the contracted CFF suppliers (Apple & CDWG), your first step should be contacting your vendor account manager. If you need further support, please contact either Dennis Fellin or Susan Rojas at the Pennsylvania Department of General Services. They are helping to work with technical and service issues.

Contact Information

Dennis Fellin: defellin@state.pa.us or (717) 346-2675
Susan Rojas: srojas@state.pa.us or (717) 346-8187

For Your Clipboard

Okay, you might not have a clipboard, but maybe you have an Address Book for your really important contacts. Well, consider the following a list of those contacts that **MUST** be in your Address Book. Contacting the appropriate support person will save you time!

Contacts!!!

✓ **Your Coach Mentor** —your first stop for ALL CFF related questions...See contact info on page 11.

✓ **Embedded Learning**
Any and all inquiries, including troubleshooting issues.

★ Tech Support Phone:
724-459-3180

★ jgeary@learningsciences.net

✓ **TPR Support**

★ Tech Support e-mail:
tpr@casenex.com

★ Phone: 866.817.0726

★ Tools and information available...

<http://tpr.casenex.com>

✓ **CFF Survey**

★ Robin Clausen,
rlc237@psu.edu



Refresh the NETS for Teachers

Special Events @ PETE & C

Your Input Requested!

Join Lynn Nolan and ISTE's CEO Don Knezek and share your thoughts about the Refresh of the National Educational Technology Standards for Teachers (NETS•T) in a Town Hall Forum style meeting.

Session: A24

Title: NETS•T Progress So Far

Date & Time: Monday, February 11, 2008, 10:15 - 11:15 am

Room: Trinidad Room

Bring your own laptop to this interactive, collaborative session to refresh the NETS for Teachers! Register in advance at www.iste.org/nets-refresh. If you can't attend PETE&C, you can still lend your voice to the NETS•T Refresh! Visit www.iste.org/nets-survey to give us your feedback!

The NETS•T were originally released in 2000. Now, we are seeking input and feedback from educators, thought leaders, and the private sector on the NETS•T so they reflect the demands and needs of Digital Age learners.

The next generation of NETS•S, released in June 2007, raised the bar high to achieve greater technology-integrated learning. We want your help to do the same with the teacher standards, performance profiles, and essential conditions. Find out more about NETS at <http://www.iste.org/nets/>.

Session: B24

**Title: ISTE NETS•T Refresh:
Respond to the Preliminary
Report**

Presenter: Lynn Nolan
Co-Presenter(s): Don Knezek

Date & Time: Monday, February 11,
2008, 11:30 am - 12:30 pm

Room: Trinidad Room

Description: Here is your opportunity to collaborate with other educators on the ISTE NETS for Teachers, as well as to the preliminary results of the refresh effort. Provide your input to create the best possible national standards for both current and pre-service teachers. Bring your laptop!

**ADDITIONAL
ISTE
SESSIONS
AT
PETE & C**

Session: C24

**Title: ISTE NETS•T Refresh:
The NETS•T in Pennsylvania**

Presenter: Shirley Campbell Time:

Date & Time: Monday, February 11,
2008, 2:00 - 3:00

Room: Trinidad Room

Description: Know how the ISTE NETS•T should fit into Pennsylvania education? Got ideas about how these standards should be involved in teacher education? How will the current NETS•T revision possibilities affect education and teaching requirements in PA? In this interactive session, collaborate to create a plan for NETS•T in PA.

2008 One-to-One Computing Conference
The Penn Stater Conference Center Hotel
Monday, April 28 through Wednesday, April 30, 2008

Call for Proposals

The 2008 One-to-One Computing conference will be held at The Penn Stater Conference Center Hotel on April 28-30, 2008. The conference will have a special emphasis toward sharing and supporting Pennsylvania schools in the *Classrooms for the Future* process.

All CFF districts are invited to attend and to present a session at the conference.

A welcome reception will be held on Monday, April 28, at 7 P. M. and informal conversations will follow. Tuesday will be a full day of concurrent sessions, as well as keynote speakers and evening banquet. We will conclude on Wednesday at 2:15 following another action-packed day of sessions.

SESSION PROPOSAL SUBMISSION

Please include...

- ✓ Title of your presentation,
- ✓ Your name
- ✓ The best proposed conference strand
 - ★ *Conference Strands*
 - Math
 - Language Arts
 - Science
 - Social Studies
 - Technology, Leadership
 - Teacher Education
- ✓ And, a 350 (or less) word description of your presentation.

Send Proposals to:

Catherine Augustine at cx66@psu.edu, (814) 360-5059

Presentation Acceptance

If you are accepted as a presenter, you will qualify for a discounted registration fee.

Deadline for Conference Presentation submission

February 10, 2008

CFF: Best Practices Institute Call for Presentations

Date: Friday, June 6, 2008

Location:

The Great Valley Campus of Penn State University

This one-day event will bring together high school teachers and school administrators who are implementing *Classrooms for the Future* (CFF) to share what works (and what to avoid!). Teachers, CFF coaches, school administrators, and others are invited to submit a 45-minute presentation, workshop, or panel.

The institute will consist of five tracks

1. Tips for Administrators
2. CFF Mathematics
3. CFF Science
4. CFF Social Studies
5. CFF English/Language Arts

Some ideas for presentation topics include

- How have you used interactive whiteboards in your classroom or district?
- Is it better to have laptops on rolling carts or in the classroom?
- A project-based unit on the American Revolution
- Gold mines on the Prentice-Hall textbook Web site
- Sources of free multimedia software
- How to put it all together and keep it going
- Planning for theft and damage
- Tips and rules for laptops in your classroom

Presentations and Workshops Submission Guidelines

Include the following:

- The **title** of your presentation or workshop
- The **track** you have chosen (listed above)
- A one-to-two paragraph **description** of your presentation or workshop
- A short **outline** of the topics you will cover
- Your **name** and **contact information**, your **position**, and your **employer**



Panels Submission Guidelines

Include the following:

- The **title** of your panel
- The **track** you have chosen (listed above)
- A one-to-two paragraph **description** of your panel
- Name, title, and a one paragraph CV for each **panel member**
- Your **name** and **contact information** as the panel coordinator, your **position**, and your **employer**

Submit by e-mail to: Dr. Roy Clariana, Education Division Head, Penn State Great Valley,
RClariana@psu.edu

The deadline for submissions is midnight on March 15, 2008.

Find out more: www.gv.psu.edu/cff

An education isn't how much you've committed to memory, or even how much you know. It's being able to differentiate between what you know and what you don't.

Anatole France

MARK YOUR CALENDARS



**PETE & C
Pennsylvania Educational
Technology Expo and Conference
Hershey Lodge and Convention
Center**

February 10 – 12, 2008

Description & registration link available
on [EdHub Calendar](#) and [cffcoach.org](#)

www.peteandc.org

PETE & C

Pre-Conference Sessions

Registration for the CFF Coach
Pre-Conference is now closed.

Additional pre-conference sessions
are available on Sunday. Choose to
attend at district expense.

Registration: www.peteandc.org

**Cape Conference
Transcending Educational
Boundaries**

**Holiday Inn Grantville
Sunday & Monday
April 6 & 7, 2008**

Details

[http://www.ape.org/
conference_details.htm](http://www.ape.org/conference_details.htm)

**4th Annual One-to-One
Computing Conference
April 28 – 30, 2008
Penn Stater, State College,
PA**

<http://ets.tlt.psu.edu/ito1/>

**One-to-One
Pre-Conference
Days Inn Penn State
April 28, 2008
8:30 – 4 P.M.**

Details forthcoming

**Librarians and Coaches' Meeting
PSLA, Hershey
May 1, 2008
8:30 A.M. – 12 P.M.**



**Classrooms
for the Future**



**Student Capitol Day
East Rotunda–Capitol Building
May 5, 2008
10 A.M. – 2 P.M.**

**Penn State Great Valley
Classrooms for the Future: Best
Practices Institute
The Great Valley Campus of Penn
State University
Friday, June 6, 2008
www.gv.psu.edu/cff**

**Legislative Day
Wednesday, June 18, 2008
*Details forthcoming***



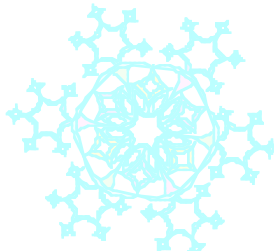
**National Educational
Computing Conference
NECC**

San Antonio, TX

June 29 – July 2, 2008

: [http://center.uoregon.edu/ISTE/
NECC2008/](http://center.uoregon.edu/ISTE/NECC2008/)

Stay Warm?



CFF Team

HOLLY JOBE
CFF PROJECT MANAGER



c-hjobe@state.pa.us

717.214.9393

BETH CORNELL
Coach Mentor



IU 11, 16, 17, 12, 15
bcornell711@yahoo.com
717.576.9070

VIRGINIA GLATZER
Coach Mentor



IU 19, 20, 21, 22, 23
vglatzer@infostweb.com
215.750.6018

MADELINE KERI
Coach Mentor



IU 1, 6, 7, 8, 10, 28
madelinekeri@gmail.com
814-442-4787

JOANNA MANGIAPANÉ
Coach Mentor



IU 2, 3, 4, 5, 9, 27
jam@tietool.com
412.398.5034

JOANNE ROMANO
Coach Mentor



IU 13, 14, 18, 24, 25, 26, 29
jroma@erols.com
610.331.6428